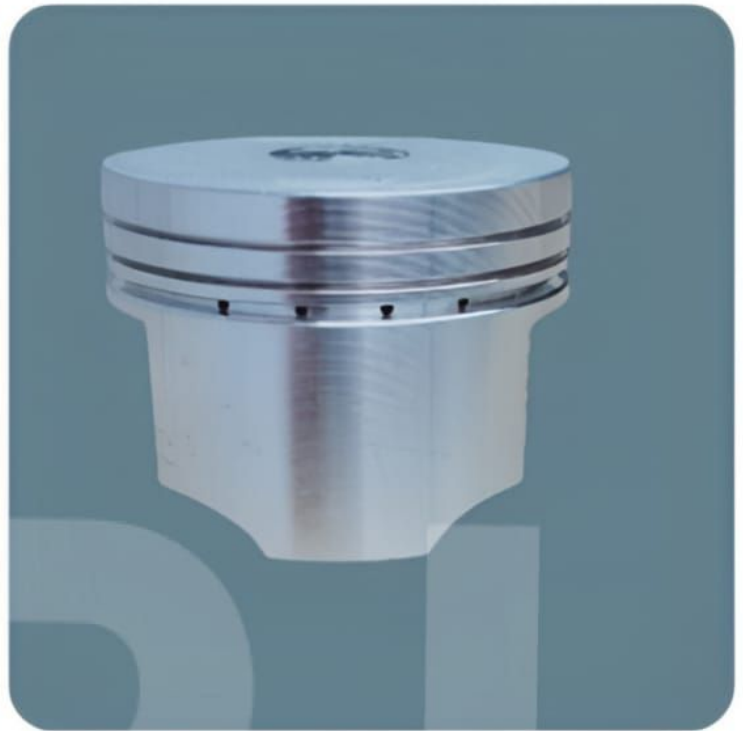




**Model: H.SPL PLUS BS6**

**Dia: 50.00mm**

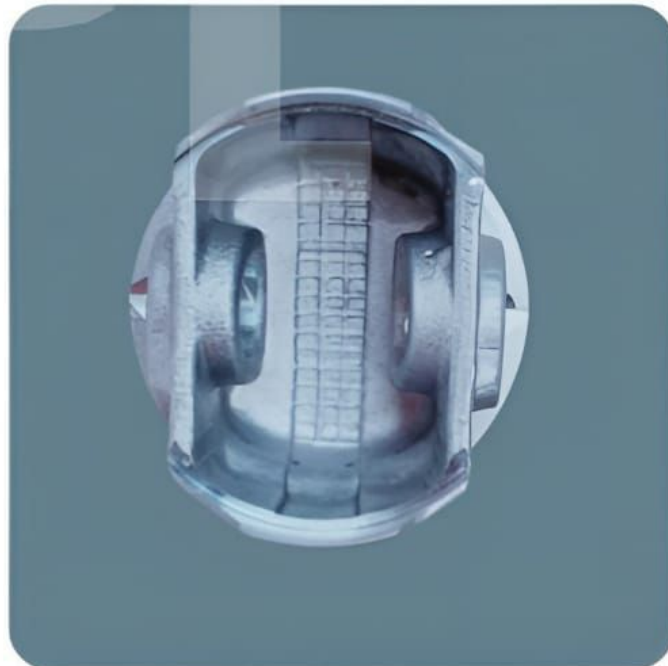
**Ring Ref: 0.80mm×0.80mm×1.50mm**



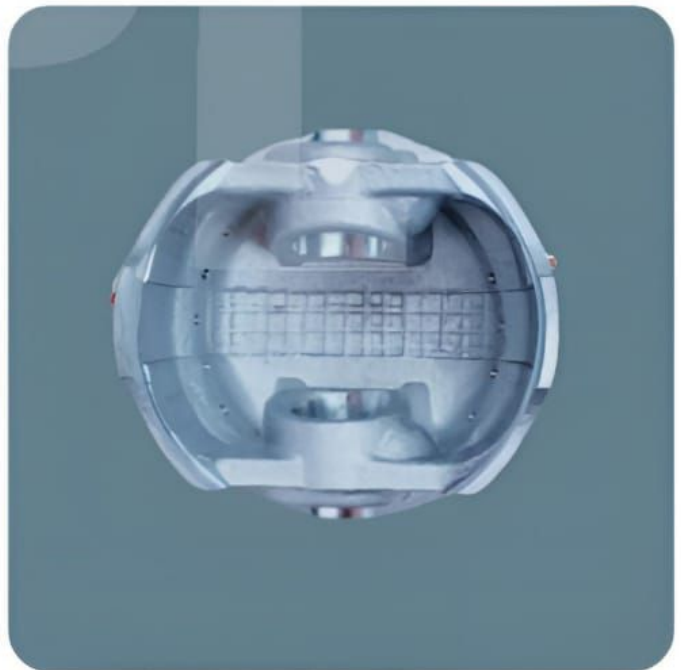
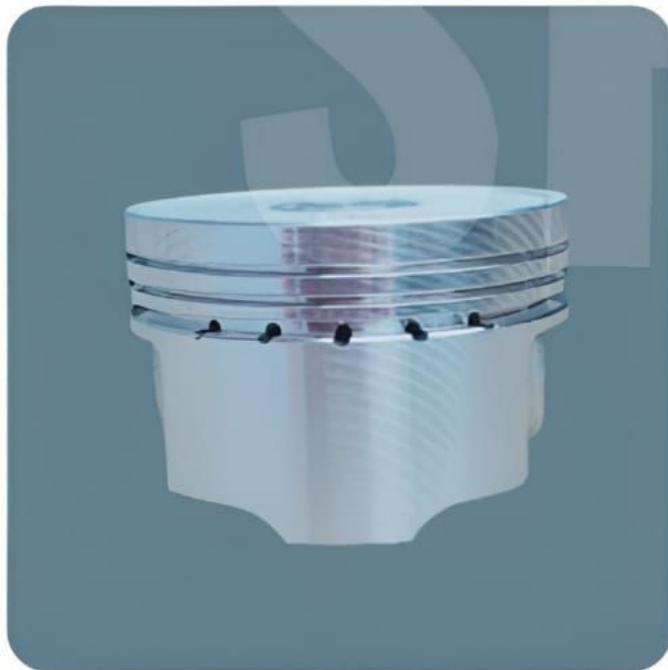
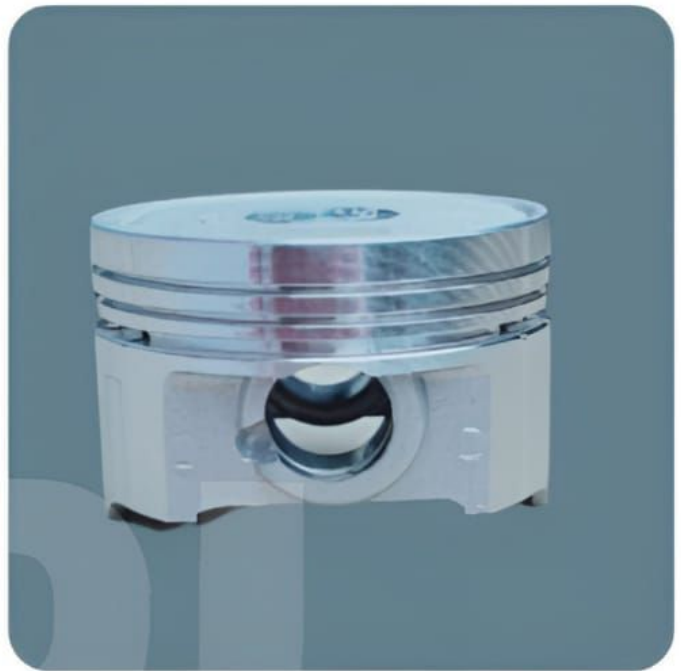
**Model: SUP.SPL BS6**

**Dia: 52.40mm**

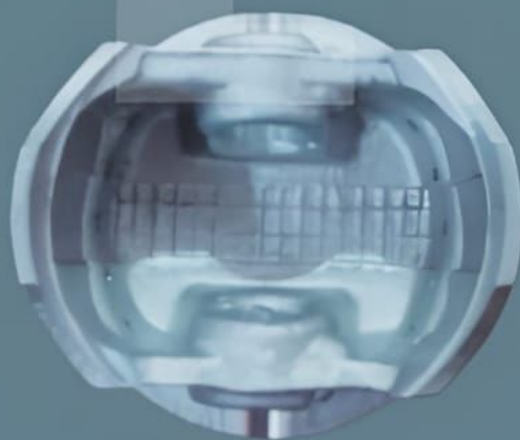
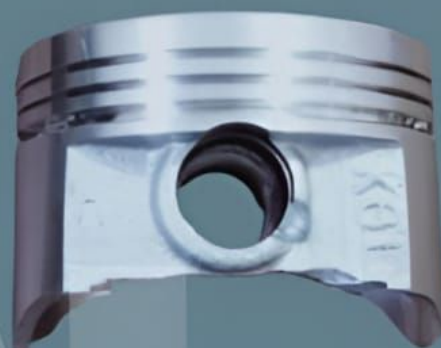
**Ring Ref: 0.80mm×0.80mm×1.50mm**



**Model: HERO DESTINI 125cc BS6**  
**Dia: 52.40mm**  
**Ring Ref: 0.80mm×0.80mm×1.50mm**



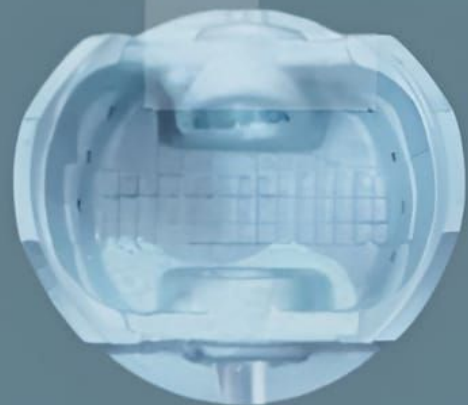
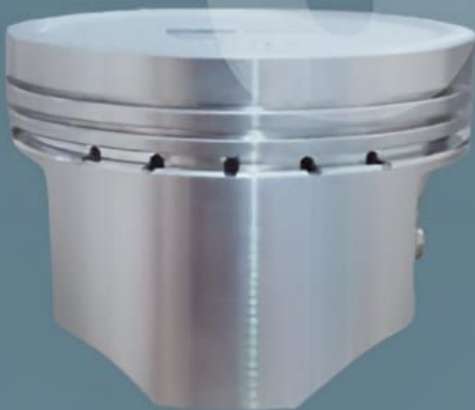
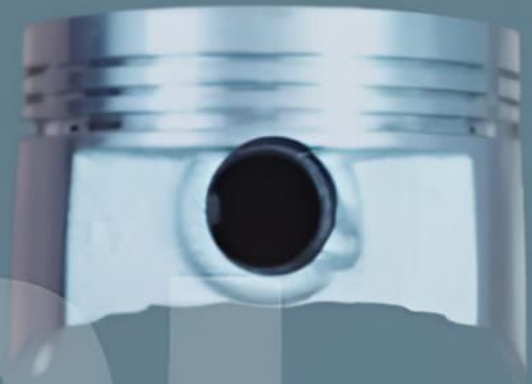
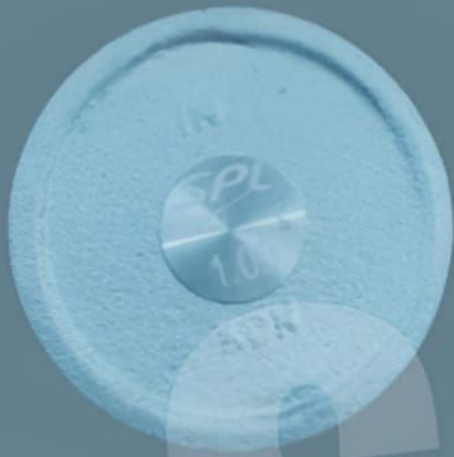
**Model: H.ACT 110 DLX BS6**  
**Dia: 47.00mm**  
**Ring Ref: 0.80mm×0.80mm×1.50mm**



**Model: H ACTIVA 125cc BS6**

**Dia: 50mm**

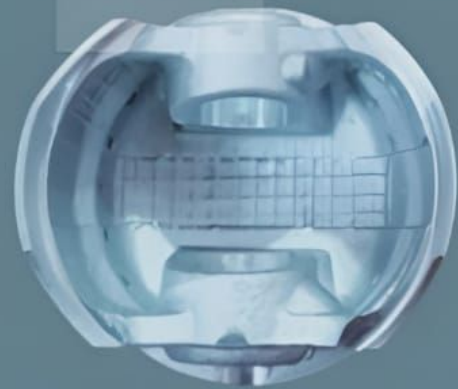
**Ring Ref: 0.80mm×0.80mm×1.50mm**



**Model: H.SHINE BS6**

**Dia: 50.00mm**

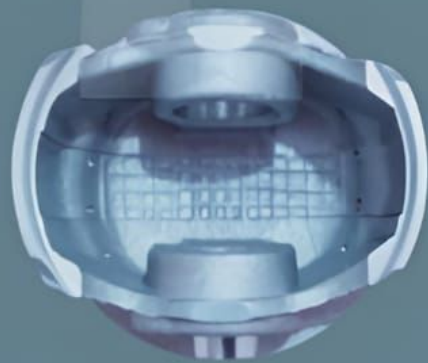
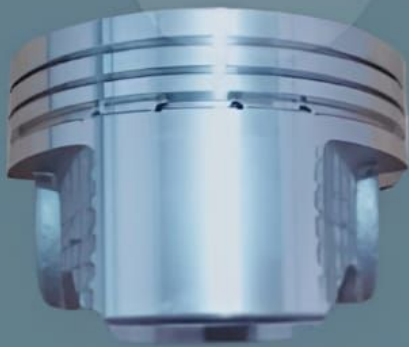
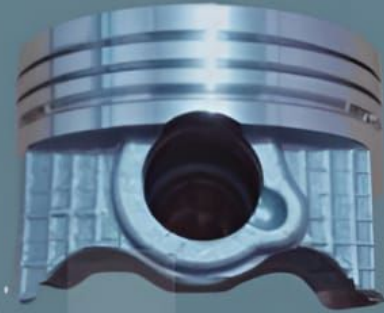
**Ring Ref: 0.80mm×0.80mm×1.50mm**



**Model: H.DREAM YUGA BS6**

**Dia: 47.00mm**

**Ring Ref: 0.80mm×0.80mm×1.50mm**

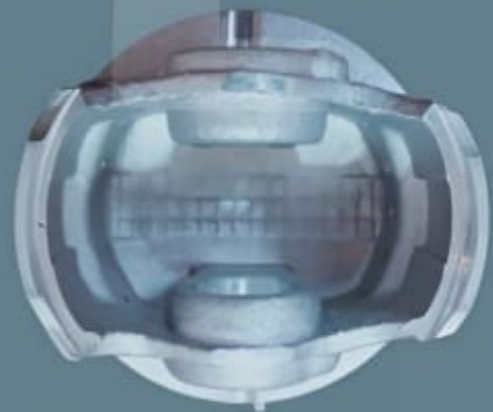


**Model:TVS XL 100 BS6**

**Dia: 51.00mm**

**Ring Ref: 0.80mm×0.80mm×1.50mm**





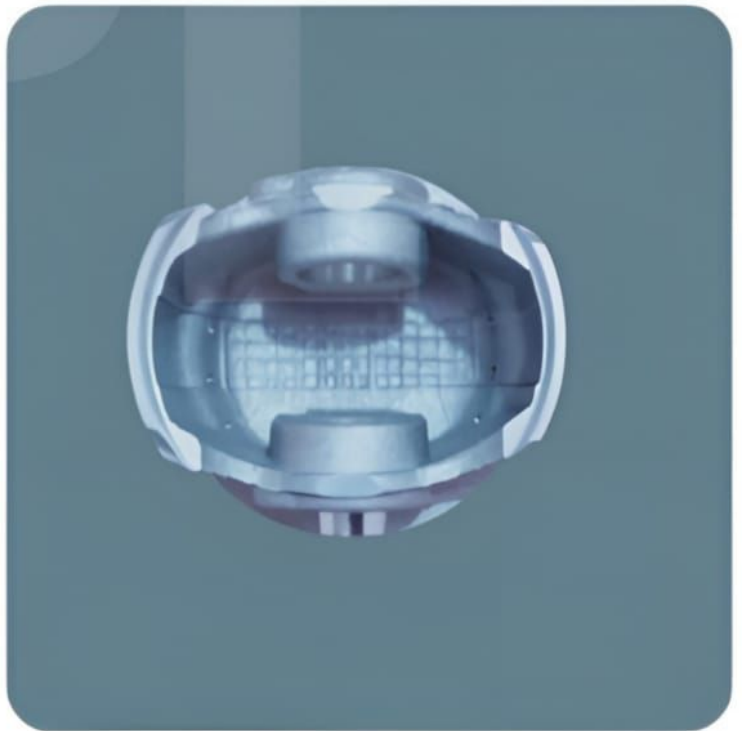
Model: TVS JUPITER BS6

Dia: 53.50mm

Ring Ref: 0.80mm×0.80mm×1.50mm



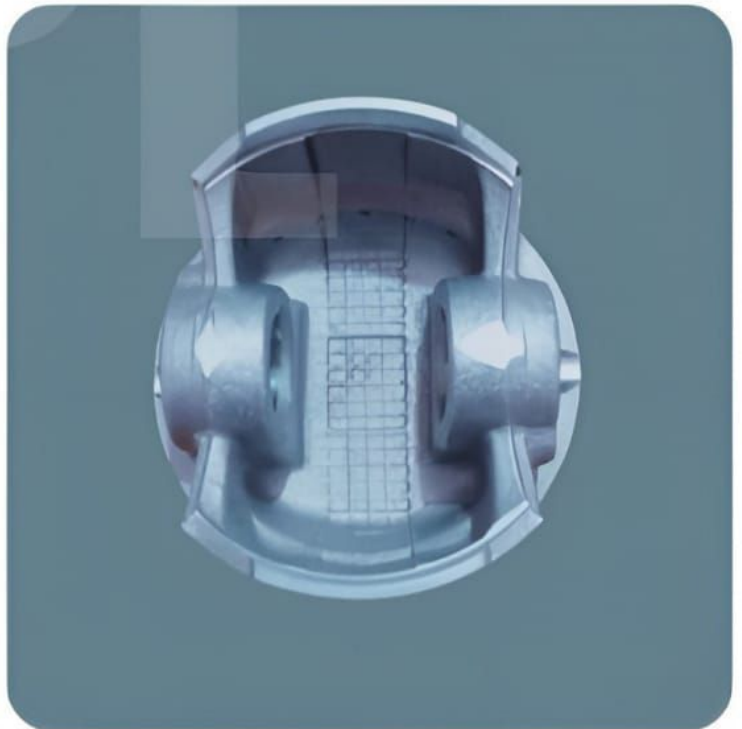
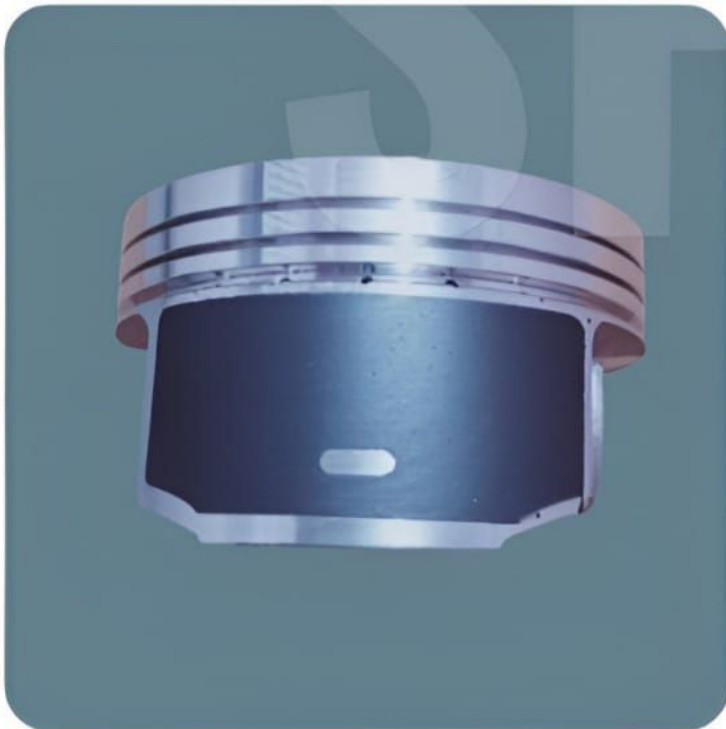
**Model: STAR CITY PLUS BS6**  
**Dia: 53.50mm**  
**Ring Ref: 0.80mm×0.80mm×1.50mm**



**Model: NTORQ BS6**

**Dia: 53.50mm**

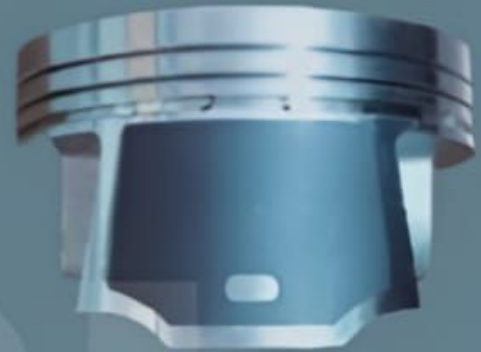
**Ring Ref: 0.80mm×0.80mm×1.50mm**



**Model: TVS A.RTR 160 4V**

**Dia: 62.00mm**

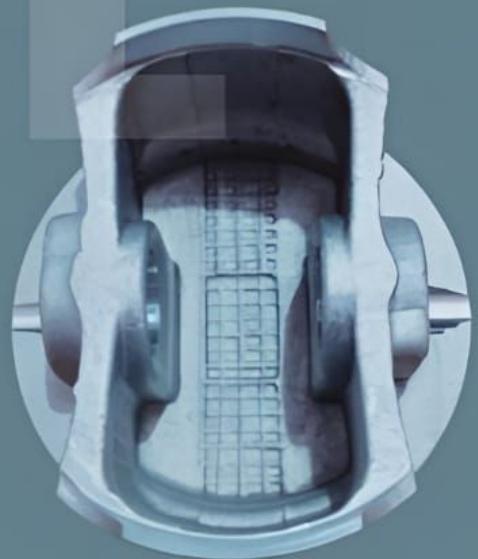
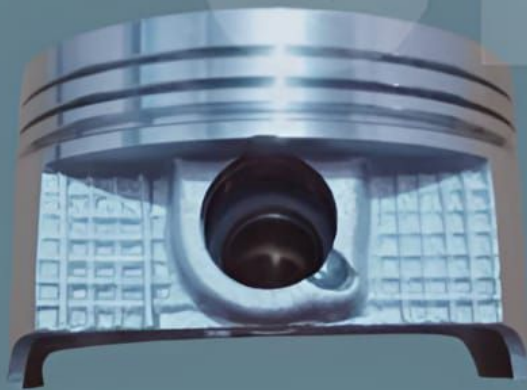
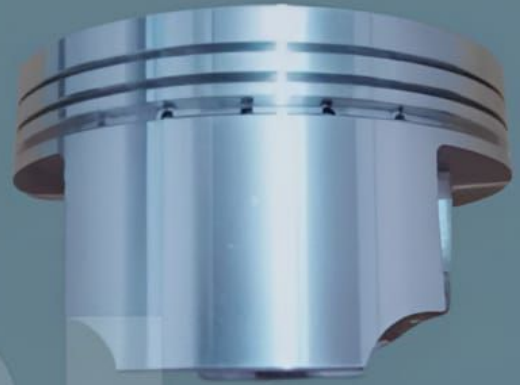
**Ring Ref: 0.80mm×0.80mm×1.50mm**



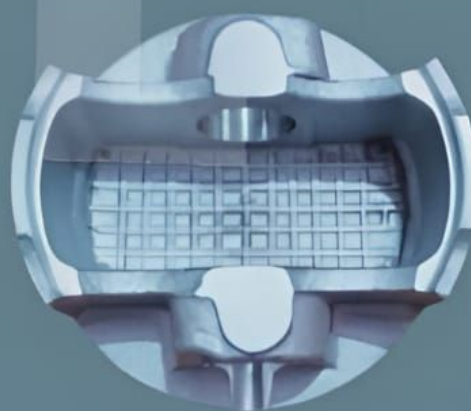
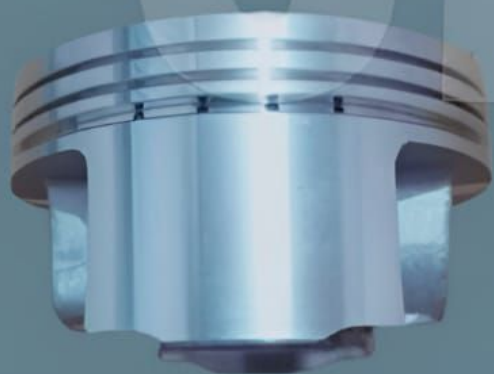
Model: TVS A.RTR 200cc

Dia : 66.00mm

Ring Ref: 0.80mm× 0.80mm×1.50mm



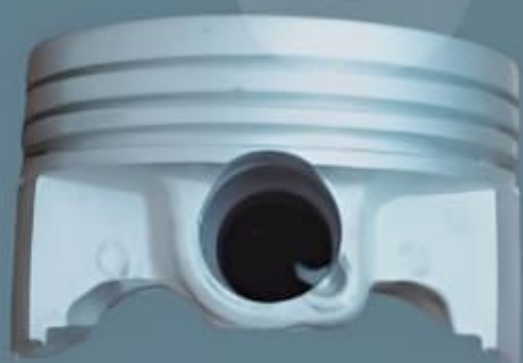
**Model: HERO XTREME 200s BS6**  
**Dia: 66.50mm**  
**Ring Ref: 1.00mm×1.00mm×2.50mm**



**Model: Y. R-15 VER.3 BS6**

**Dia: 58.00mm**

**Ring Ref: 0.80mm×0.80mm×1.50mm**

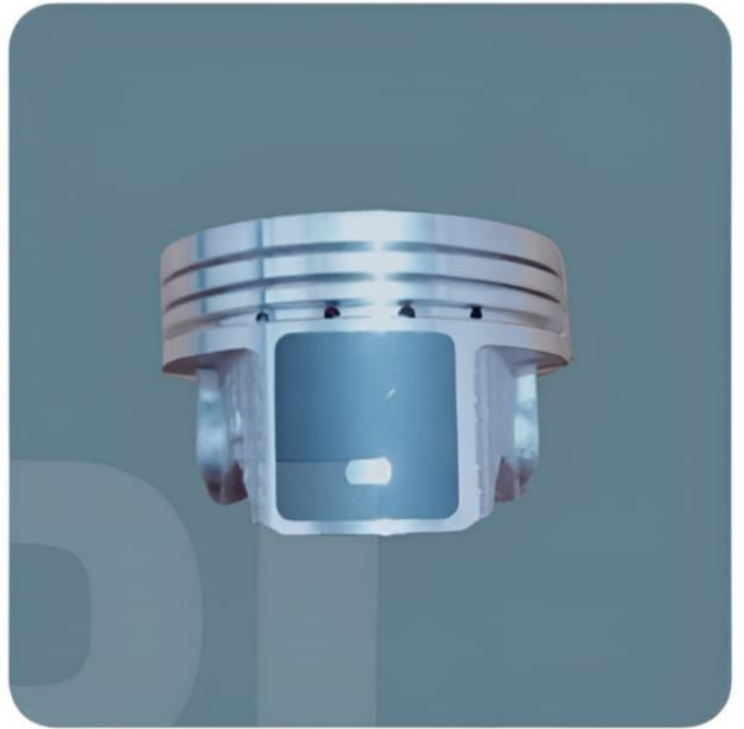


**Model: YAMAHA RAYZ BS6**

**Dia: 52.40mm**

**Ring Ref: 0.80mm×0.80mm×1.50mm**





**Model: TVS PEP PLUS BS6**

**Dia: 51.00mm**

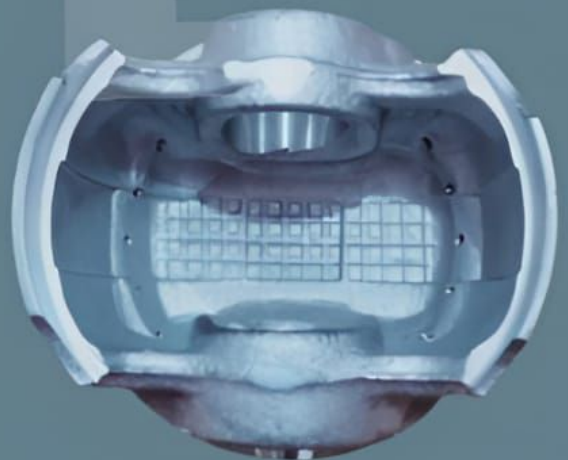
**Ring Ref: 0.80mm×0.80mm×1.50mm**



**Model: LML NV SPEEDY BS6**

**Dia: 57.00mm**

**Ring Ref: 1.00mm×1.00mm×2.00mm**



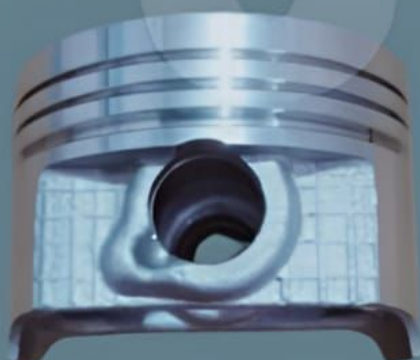
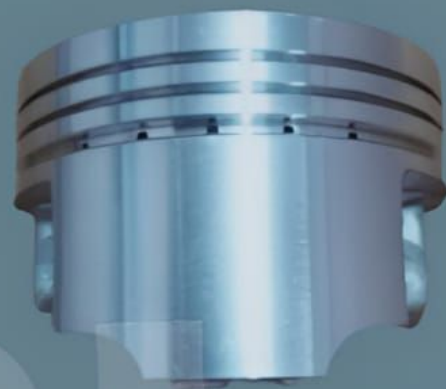
**Model: BAJAJ DIS.125cc BS6**

**Dia: 52.00mm**

**Ring Ref: 0.80mm×0.80mm×1.50mm**



**Model: BAJAJ PULSAR 125 BS6**  
**Dia: 56.00mm**  
**Ring Ref: 0.80mm×0.80mm×1.50mm**



**Model: PASSION PRO BS6**

**Dia: 50.00mm**

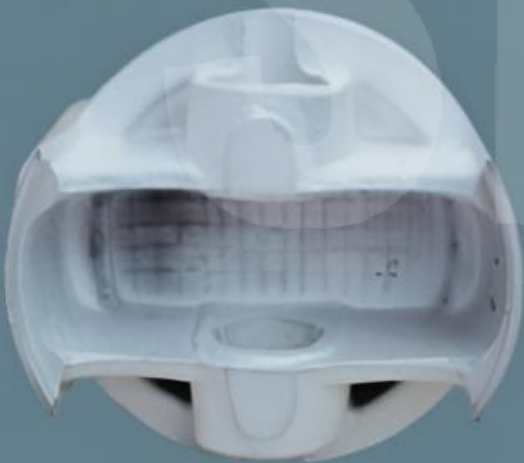
**Ring Ref: 0.80mm×0.80mm×1.50mm**



**Model: TVS A.RTR 160 BS6**

**Dia: 62.00mm**

**Ring Ref: 0.80mm×0.80mm×1.50mm**



**Model: YAMAHA FZ 250CC**

**Dia: 74.00mm**

**Ring Ref: 0.90mm×0.80mm×1.50mm**

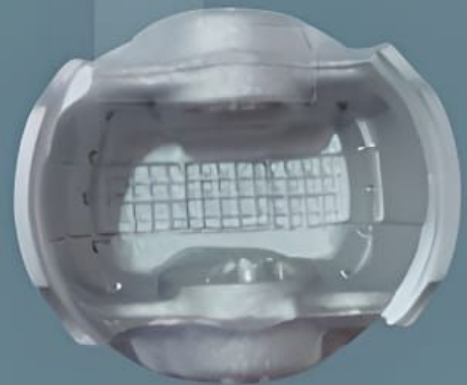
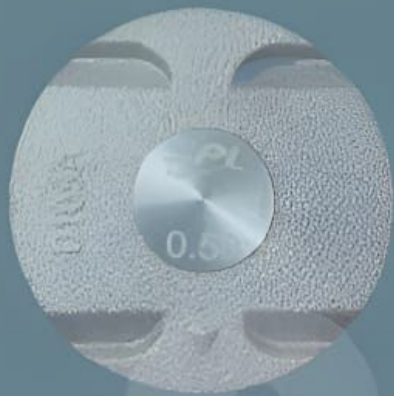


**Model: SUZUKI ACCESS NEW**

**Dia: 52.50mm**

**Ring Ref: 0.80mm×0.80mm×1.50mm**

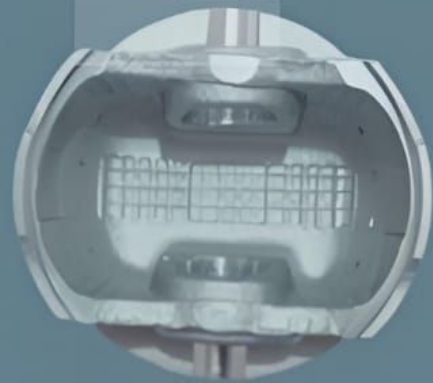
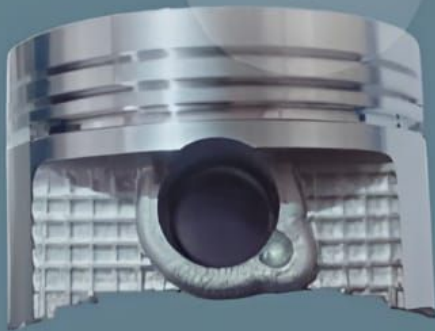




**Model: PULSAR 125 N.S 4 VALVE**

**Dia: 52.00mm**

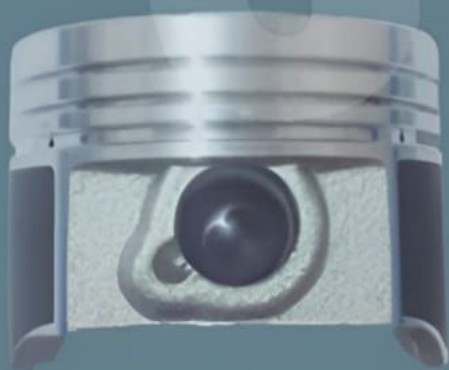
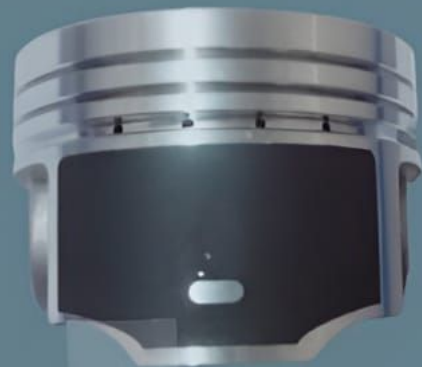
**Ring Ref: 0.80mm×0.80mm×1.50mm**



**Model: TVS A.RTR-200 BS6**

**Dia: 56.00mm**

**Ring Ref: 0.80mm×0.80mm×1.50mm**



Model: PLATINA ES 100 BS6

Dia: 50.00mm

Ring Ref: 0.80mm×0.80mm×1.50mm



**Model: TVS A.RTR 180cc BS6**

**Dia: 62.50mm**

**Ring Ref: 0.80mm×0.80mm×1.50mm**



**Model: TVS PHOENIX BS6**

**Dia: 52.50mm**

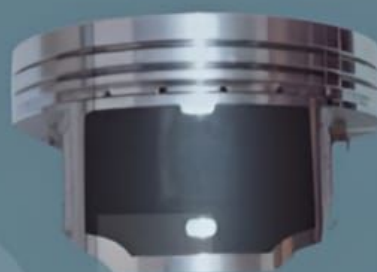
**Ring Ref: 0.80mm×0.80mm×2.00mm**



**Model: B.DISCOVER 150 BS6**

**Dia: 56.00mm**

**Ring Ref: 0.80mm×0.80mm×1.50mm**



**Model: X-PULSE 200 4V BS6**

**Dia: 66.50mm**

**Ring Ref: 1.00mm×1.00mm×2.50mm**



**Model: KTM- 200 DUKE**

**Dia: 72.00mm**

**Ring Ref: 1.00mm×1.00mm×2.00mm**