

Model: BAJAJ CHETAK
Dia: 57mm
Ring Ref: 2.50mm x 2.50mm



Model: BAJAJ CLASSIC
Dia: 57mm
Ring Ref: 2.00mm×2.00mm



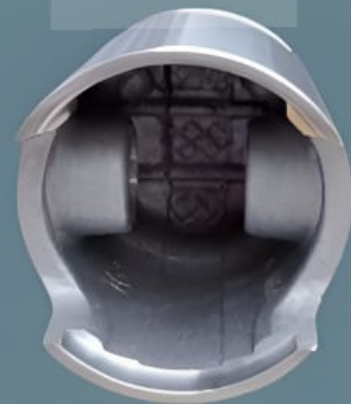
Model: BAJAJ BRAVO
Dia: 57mm
Ring Ref: 1.50m×1.50mm



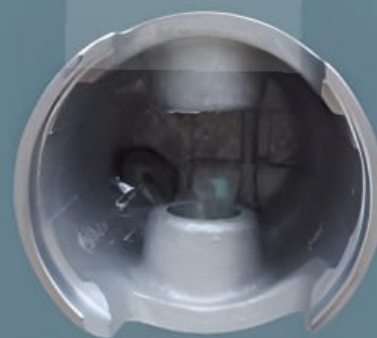
Model: BAJAJ CUB
Dia: 50mm
Ring Ref: 1.50mm×1.50mm



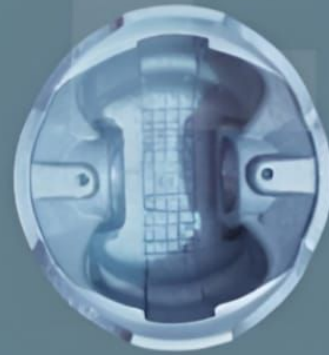
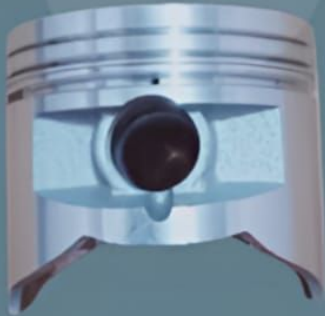
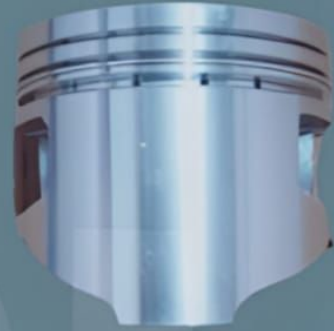
Model: BAJAJ FE-15
Dia: 54mm
Ring Ref: 2.00mm×1.50mm



Model: BAJAJ M-74
Dia: 46.30mm
Ring Ref: 2.00mm×2.00mm



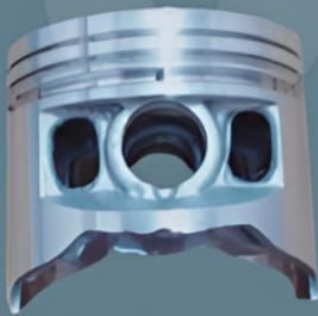
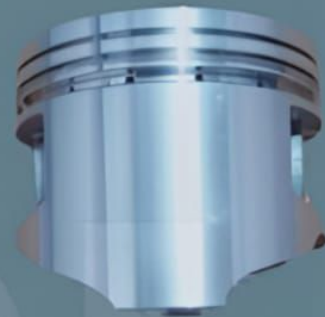
Model: BAJAJ M-80
Dia: 47.00mm
Ring Ref: 2.00mm×2.00mm



Model: BAJAJ KB-4S

Dia: 50.00mm

Ring Ref: 0.80mm×0.80mm×1.50mm



Model: BAJAJ CALIBER

Dia: 53.00mm

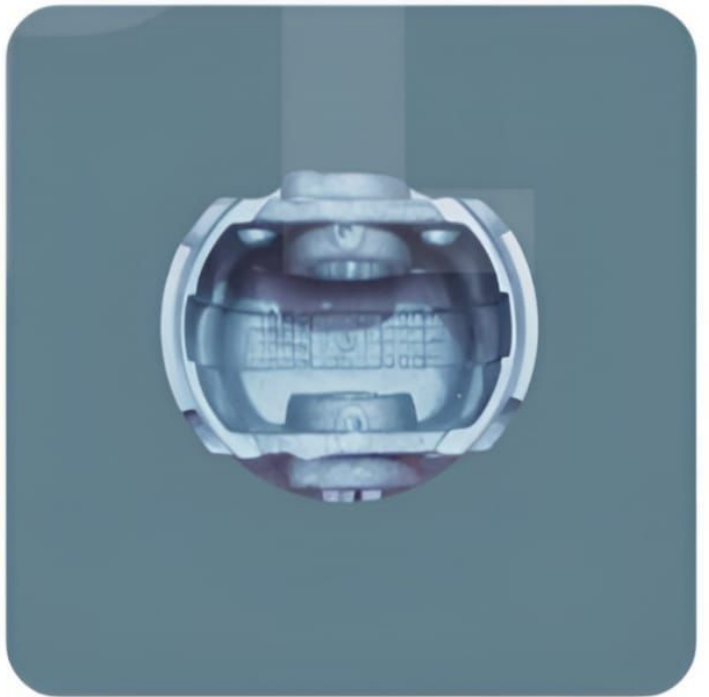
Ring Ref: 0.80mm×0.80mm×2.00mm



Model: BAJAJ CT-100

Dia: 53.00mm

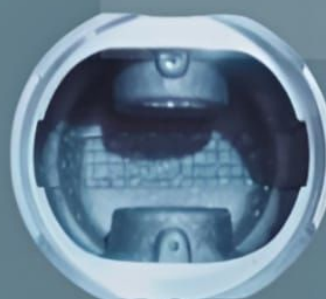
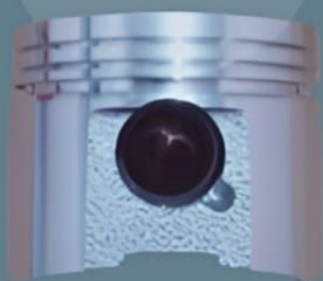
Ring Ref: 0.80mm×0.80mm×1.50mm



Model: BAJAJ PULSAR 135cc

Dia: 54.00mm

Ring Ref: 0.80mm×0.80mm×1.50mm



Model: BAJAJ PULSAR 150cc

Dia: 57.00mm

Ring Ref: 1.00mm×1.00mm×2.00mm



Model: B.PULSAR 150 UG3

Dia: 58.00mm

Ring Ref: 0.80mm×0.80mm×1.50mm



Model: B.PULSAR 180cc

Dia: 58.00mm

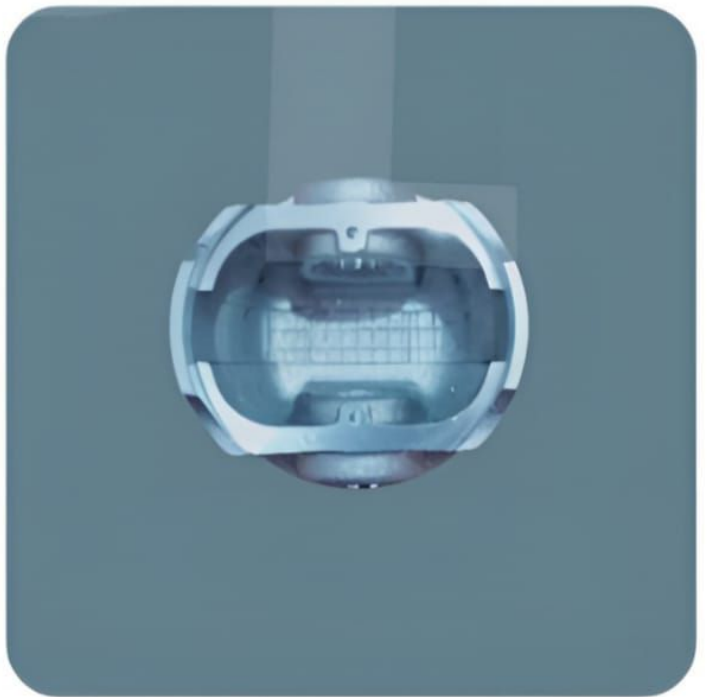
Ring Ref: 1.00mm×1.00mm×2.50mm



Model: B.PLATINA 100 ES

Dia: 47.00mm

Ring Ref: 0.80mm×0.80mm×1.50mm



Model: B. DISCOVER 100cc

Dia: 47.00mm

Ring Ref: 0.80mm×0.80mm×1.50mm



Model: B. DISCOVER 100 4V

Dia: 47.00mm

Ring Ref: 0.80mm×0.80mm×1.50mm



Model: B. DISCOVER 125cc

Dia: 57.00mm

Ring Ref: 1.00mm×1.00mm×2.00mm



Model: B. DISCOVER 125cc 4V

Dia: 47.00mm

Ring Ref: 0.80mm×0.80mm×1.50mm



Model: B. DISCOVER 125 (DTSI)

Dia: 54.00mm

Ring Ref: 0.80mm×0.80mm×1.50mm



Model: B. DISCOVER 135cc

Dia: 58.00mm

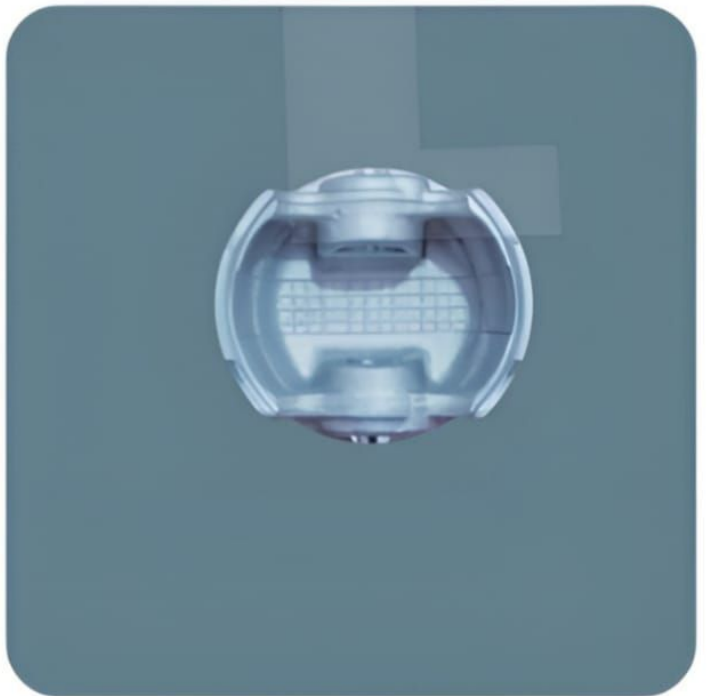
Ring Ref: 0.80mm×0.80mm×1.50mm



Model: B. DISCOVER 150cc

Dia: 56.00mm

Ring Ref: 0.80mm×0.80mm×1.50mm



Model: B. DISCOVER 150cc 4V

Dia: 56.00mm

Ring Ref: 0.80mm×0.80mm×1.50mm



Model: BAJAJ XCD 125cc

Dia: 54.00mm

Ring Ref: 0.80mm×0.80mm×1.50mm



Model: BAJAJ WIND

Dia: 54.00mm

Ring Ref: 0.80mm×0.80mm×2.00mm



Model: BAJAJ PLATINA 125cc

Dia: 54.00mm

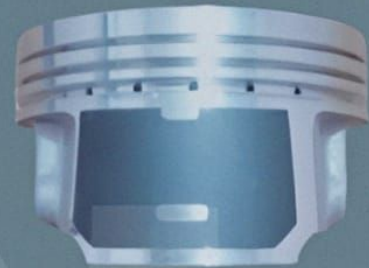
Ring Ref:0.80mm×0.80mm×1.50mm



Model: BAJAJ M-80(4 Stroke)

Dia: 44.00mm

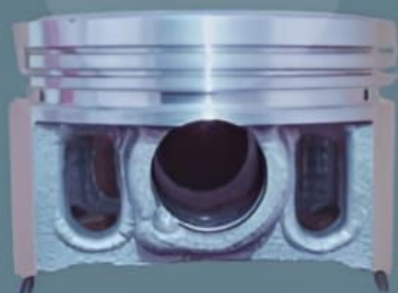
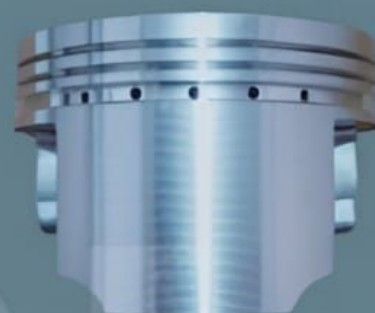
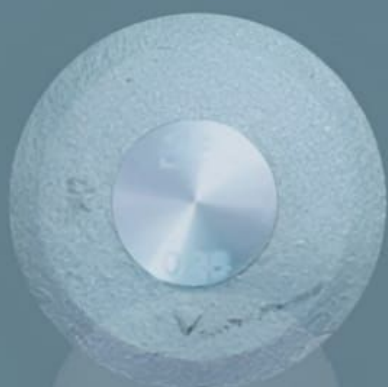
Ring Ref: 1.00mm×1.00mm×2.00mm



Model: BAJAJ VIKRANTA-15

Dia: 57.00mm

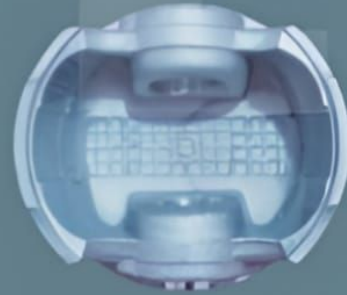
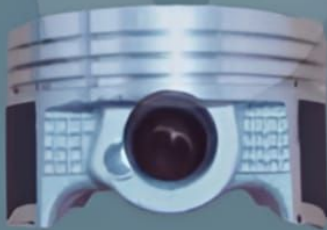
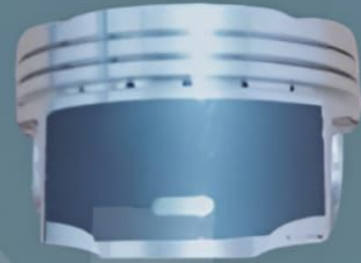
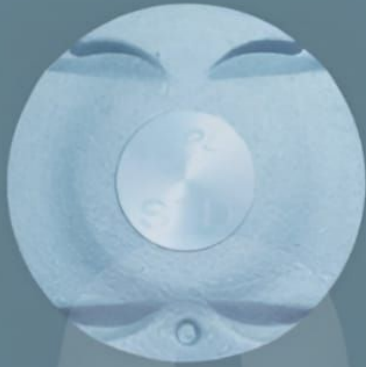
Ring Ref: 0.80mm×0.80mm×2.00mm



Model: BAJAJ PULSAR 220cc

Dia: 67.00mm

Ring Ref: 1.00mm×1.00mm×2.50mm



Model: BAJAJ XCD 135cc

Dia: 54.00mm

Ring Ref: 0.80mm×0.80mm×1.50mm



Model: B.PULSAR 150 A.S

Dia: 56.00mm

Ring Ref: 0.80mm×0.80mm×1.50mm



Model: B.PULSAR 200 N.S

Dia: 72.00mm

Ring Ref: 1.00mm×1.00mm×2.00mm



Model: B.PULSAR 160 N.S

Dia: 58.00mm

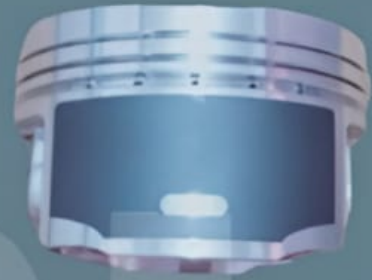
Ring Ref: 0.80mm×0.80mm×1.50mm



Model: B. DISCOVER 110cc

Dia: 50.00mm

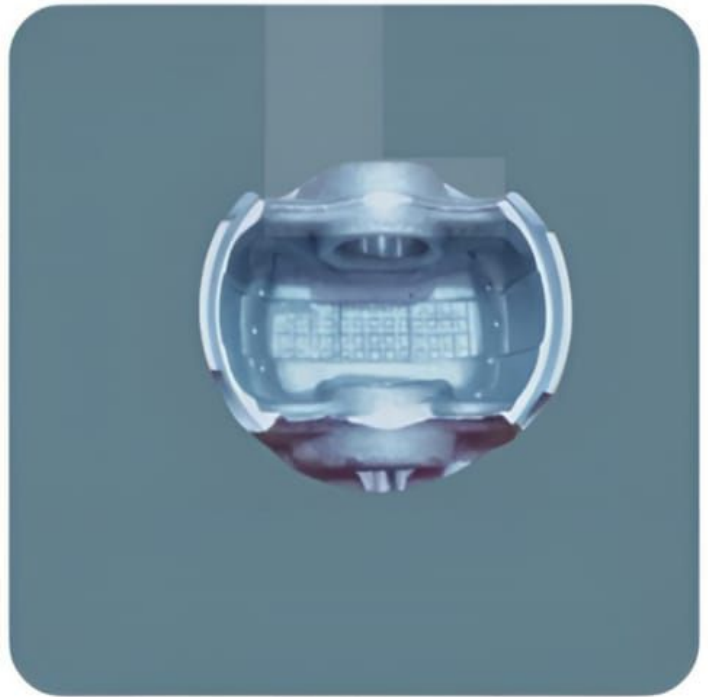
Ring Ref: 0.80mm×0.80mm×1.50mm



Model: B.PULSAR 150 UG5

Dia: 56.00mm

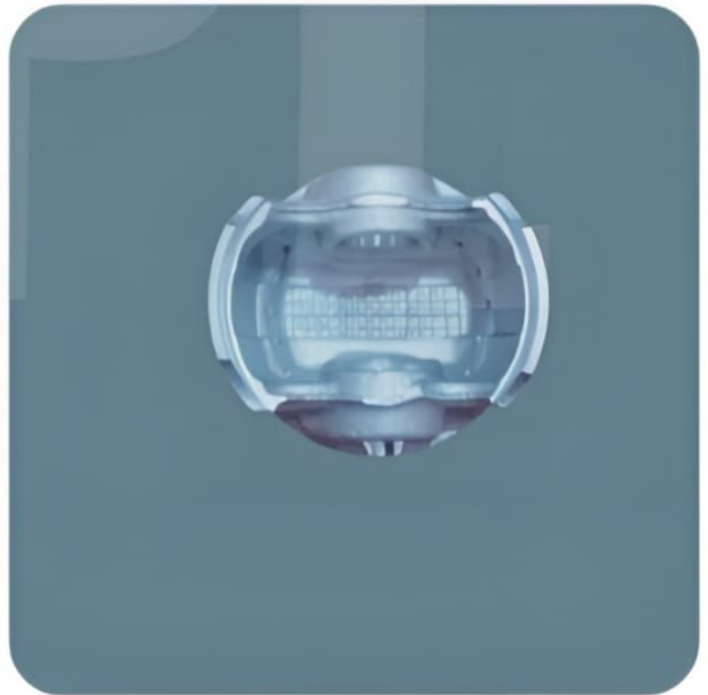
Ring Ref: 0.80mm×0.80mm×1.50mm



Model: B. VIKRANTA-12

Dia: 52.00mm

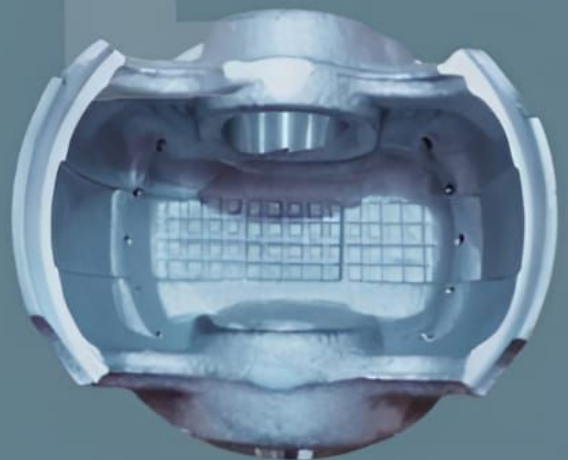
Ring Ref: 0.80mm×0.80mm×1.50mm



Model: B.PULSAR 125 N.S 4V

Dia: 52.00mm

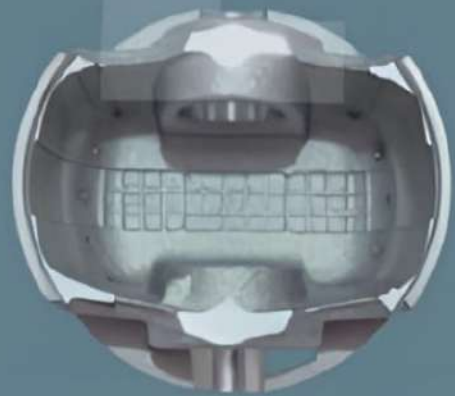
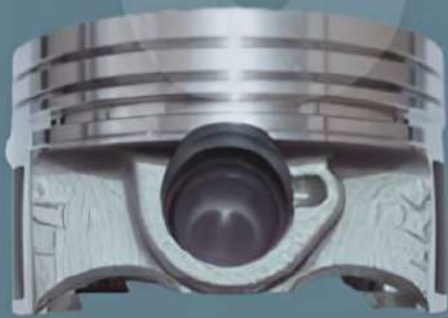
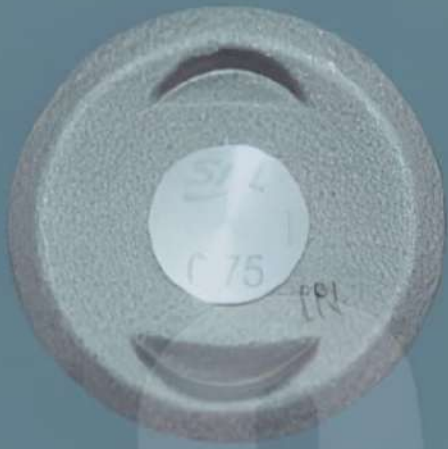
Ring Ref: 0.80mm×0.80mm×1.50mm



Model: BAJAJ DIS.125cc BS6

Dia: 52.00mm

Ring Ref: 0.80mm×0.80mm×1.50mm



Model: BAJAJ COMPACT BS4

Dia: 63.50mm

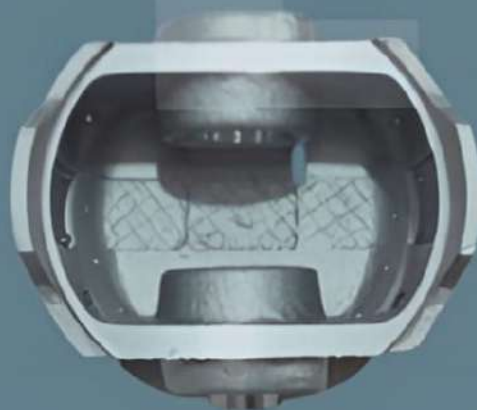
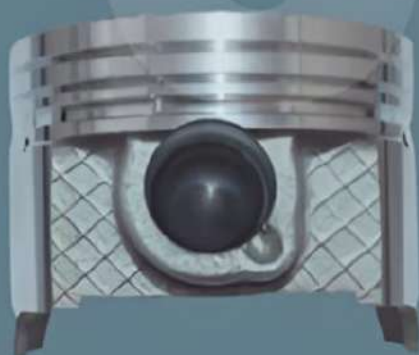
Ring Ref: 1.00mm×1.00mm×2.00MM



Model: BAJAJ COMPACT NEW

Dia: 63.50mm

Ring Ref: 1.00mm×1.00mm×2.00mm



Model: B. GC-1000
Dia: 61.00mm
Ring Ref: 1.00mm×1.00mm×2.00mm



Model: BAJAJ MAXIMA

Dia: 67.00mm

Ring Ref: 1.00mm×1.00mm×2.50MM